



CANTEEN STORES DEPARTMENT SALES

Serving those who serve our nation without rest.

 **TOYOTA**



PRESENTING
TOYOTA'S RANGE OF CARS
WITH SPECIAL BENEFITS

THE ILLUSTRIOUS LEGACY OF TOYOTA



Toyota Motor Corporation entered India in 1997 by establishing Toyota Kirloskar Motor Pvt. Ltd. (TKM) as a joint venture with Kirloskar Group. Soon we established a manufacturing unit in Bidadi, Karnataka spread across 850 acres with an annual production capacity of over 320,000 vehicles. Through our philosophy of 'Kaizen', we continuously listen to our customers which enables us to build ever better cars that cater to their requirements and fulfil their desires. No wonder, the Innova and Fortuner are leaders of their respective segments.

CANTEEN STORES DEPARTMENT (CSD)

Our armed forces safeguards our nation and secures our lives. Their selfless service can never be repaid by us. However, Toyota tries its best by giving military personnel the opportunity to own their favourite Toyota cars for less than the normal market price through the CSD program.

Step 1



TOYOTA

Visit : <https://www.toyotabharat.com/corporate-sales/>



Step 2



TOYOTA

Visit the Govt section → Govt Employee Register your enquiry in the webpage [Select the Toyota Dealer registered with CSD Depot in your location]



Step 3



TOYOTA

Toyota Dealer will issue -
i) Proforma Invoice [basis CSD Price List]
ii) Availability Certificate for the selected model



Step 6



TOYOTA

Share the Purchase Order with registered Toyota Dealer



Step 5



Submit documents in CSD canteen CSD Depot/URC] for Purchase Order Issuance



Step 4

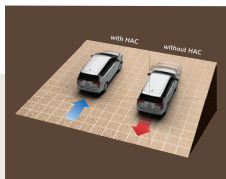


Fill the online application form and upload the relevant documents in CSD website <https://afd.csdindia.gov.in/> Generate CSD Challan

For recommended process please visit CSD portal

UNMATCHED BOLDNESS. UNRIVALED DOMINANCE.

The new imposing Innova Crysta further enhances the legendary MPV that has been the leader for over 15 years with bold exterior design, added comforts, advanced connectivity and safety features.



Hill Start Assist Control



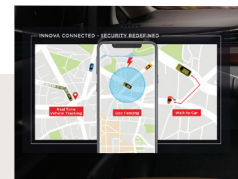
Front & Rear Clearance Sonar*



Diamond Cut alloy wheels



Android Auto & AutoCar Play



Connectivity Features

SPECIFICATIONS OF INNOVA

GRADE	G X	G X	V X
ENGINE TYPE	MANUAL	AUTOMATIC	MANUAL
SEATING CAPACITY	7 / 8 SEATER	7 / 8 SEATER	7 / 8 SEATER
ENGINE, TRANSMISSION & CHASSIS			
DISPLACEMENT	2 393 cm ³ (cc)	2 393 cm ³ (cc)	2 393 cm ³ (cc)
DRIVE MODES	ECO & POWER MODE		
MAX. OUTPUT	110 kW (150 PS) @ 3 400 rpm	110 kW (150 PS) @ 3 400 rpm	110 kW (150 PS) @ 3 400 rpm
MAX. TORQUE	343 Nm @ 1 400 - 2 800 rpm	360 Nm @ 1 400 - 2 600 rpm	343 Nm @ 1 400 - 2 800 rpm
TRANSMISSION	5 SPEED MANUAL	6 SPEED AUTOMATIC WITH SEQUENTIAL SHIFT	5 SPEED MANUAL
TYRES	205 / 65 R16 WITH ALLOY WHEELS***		
EXTERIOR			
RADIATOR GRILLE	NEW DESIGN BLACK & SILVER		NEW DESIGN PREMIUM BLACK & CHROME
HEADLAMP	MULTIREFLECTOR		AUTOMATIC LED PROJECTOR, HALOGEN WITH LED CLEARANCE LAMP
OUTSIDE REAR VIEW MIRROR	BODY COLOURED, ELECTRIC ADJUST & RETRACT WELCOME LIGHTS WITH SIDE TURN INDICATORS		
INTERIOR			
INDIRECT BLUE AMBIENT ILLUMINATION	x	x	✓
STEERING WHEEL	URETHANE WITH SILVER ORNAMENT AND SWITCHES FOR AUDIO, TELEPHONE, MULTI INFORMATION DISPLAY		LEATHER WRAP WITH SILVER & WOOD FINISH ORNAMENT AND SWITCHES FOR AUDIO, TELEPHONE, VOICE RECOGNITION, MULTI INFORMATION DISPLAY
SPEEDOMETER	WITH MULTI INFORMATION DISPLAY		
MULTI INFORMATION DISPLAY (MID)	DOT TYPE MID WITH DRIVE INFORMATION (FUEL CONSUMPTION, CRUISING RANGE, AVERAGE SPEED, ELAPSED TIME, ECO INDICATOR) OUTSIDE TEMPERATURE	DOT TYPE MID WITH DRIVE INFORMATION (FUEL CONSUMPTION, CRUISING RANGE, AVERAGE SPEED, ELAPSED TIME, ECO INDICATOR), OUTSIDE TEMPERATURE, SHIFT POSITION INDICATOR	TFT MID WITH DRIVE INFORMATION (FUEL CONSUMPTION, CRUISING RANGE, AVERAGE SPEED, ELAPSED TIME, ECO DRIVE INDICATOR & ECO SCORE, ECO WALLET), OUTSIDE TEMPERATURE, AUDIO DISPLAY, PHONE CALLER DISPLAY, WARNING MESSAGE
SEATS, COMFORT & CONVENIENCE			
AIR CONDITIONER	MANUAL CONTROL (FRONT & REAR)		AUTOMATIC CLIMATE CONTROL WITH COOL START AND REGISTER ORNAMENT
FRONT SEAT	SEPARATE SEATS WITH SLIDE & RECLINE, DRIVER SEAT HEIGHT ADJUST		
8-WAY POWER ADJUST DRIVER SEAT	x	x	x
SEAT COVER MATERIAL	BLACK FABRIC		PREMIUM BLACK FABRIC WITH STITCHED 'CRYSTA' INSIGNIA-
AUDIO	8.0 DISPLAY AUDIO, CAPACITIVE TOUCH SCREEN, FLICK & DRAG FUNCTION, BLUETOOTH		
SMART PHONE CONNECTED AUDIO [ANDROID AUTO & APPLE CARPLAY]	✓	✓	✓
POWER OUTLET	12 V x 2 UNITS		USB FAST CHARGING PORT [^] , 12 V x 2 UNITS
HEAT REJECTION GLASS	x	x	✓
SMART ENTRY SYSTEM	x	x	✓
WIRELESS DOOR LOCK	WITH JACK-KNIFE KEY		WITH SMART ENTRY KEY & PUSH START / STOP BUTTON
EASY CLOSER BACK DOOR	x	x	x
CRUISE CONTROL	x	✓	✓***
SEAT BACK TABLE	x	x	✓
TILT & TELESCOPIC STEERING COLUMN	✓	✓	✓
SAFETY & SECURITY			
SRS AIRBAG**	DRIVER, FRONT PASSENGER & DRIVER KNEE AIRBAGS** (3 UNITS)		
ABS WITH EBD & BA	✓	✓	✓
VEHICLE STABILITY CONTROL	✓	✓	✓
HILL START ASSIST CONTROL	✓	✓	✓
FRONT & REAR CLEARANCE SONAR WITH MID INDICATION	REAR ONLY		✓

*Mix of Genuine and Synthetic Leather. *Grade E G & G Plus are made to order. For the detailed specification sheet please refer brochure. - Diesel variants only. **Perforation, Embossing and Ivory color on Diesel variants only. ^ USB Fast Charging on Diesel variants only. **For more details on the functioning of Airbags please refer to the owner's manual. * Available only in VX and above models. ** Available only in GX & above models. ***Not available in taxi Variant. ***Spare wheel material is Steel & Spare Tyre size is 205/65 R16.



THE NEW TOYOTA
GLANZA
GO AHEAD!

LET'S GO HATCHIN'

The Toyota Glanza is equipped with a powerful yet fuel efficient K-series engine that delivers a superior driving experience with exceptional power and low-end torque. Giving you all the thrills and performance you need to make your plans way more exciting.



Seamless CVT/MT Transmission



Extra Large Boot Space



Dual Front SRS Airbags



Interactive TFT Multi Info Display



60:40 Split Rear Seats

SPECIFICATIONS OF GLANZA

Engine	Displacement	1197 cc (cm ³)			
	Fuel Type	Petrol			
	Max. Power	G MT (Advanced Li-Ion Battery with ISG) : 66 kW (89.7 PS) @ 6000 rpm G MT, G CVT, V MT, V CVT : 61 kW (82.9 PS) @ 6000 rpm			
	Max. Torque	G MT (Advanced Li-Ion Battery with ISG) : 113 Nm @ 4400 rpm G MT, G CVT, V MT, V CVT : 113 Nm @ 4200 rpm			
	No. of Cylinders	4			
Transmission	Emission Standard	BS VI			
	Type	5 MT / CVT			
Dimensions & Weight	Length	3995 mm			
	Width	1745 mm			
	Height	1510 mm			
	Wheelbase	2520 mm			
	Boot Space ¹	339 l (0.339 m ³)			
	Turning Radius	4.9 m			
	Fuel Tank Capacity	37 l (0.037 m ³)			
	Seating Capacity	5			
Suspension	Kerb Weight	G MT (Advanced Li-Ion Battery with ISG) : 910 kg, G MT, V MT : 890 kg, G CVT, V CVT : 935 kg			
	Gross Vehicle Weight	G MT (Advanced Li-Ion Battery with ISG), G CVT, V CVT : 1360 kg, G MT, V MT : 1340 kg			
	Fuel Efficiency ²	G MT (Advanced Li-Ion Battery with ISG) : 23.87 kmpl, G MT, V MT : 21.01 kmpl, G CVT, V CVT : 19.56 kmpl			
Brakes	Front	Mac Pherson Strut			
	Rear	Torsion Beam			
Wheel & Tyre	Front	Disc			
	Rear	Drum			
Grade	Wheel & Tyre Size ³	195 / 55 R16 (Alloy Wheel)			
Exterior		G	V	G	V
		MT (Manual Transmission)		CVT (Continuously Variable Transmission)	
LED Projector Headlamps	✓ (with Light Guide)	✓ (with DRL)	✓ (with Light Guide)	✓ (with DRL)	
LED Rear Combination Lamps	✓	✓ (with Light Guide)	✓	✓ (with Light Guide)	
Diamond-cut Alloy Wheels	✓	✓	✓	✓	
Front Two Slat 3D Sophisticated Chrome Grille	✓	✓	✓	✓	
Stylish Body Colour Bumper & ORVM	✓	✓	✓	✓	
Chrome Outside Door Handle & Window Lining	✓	✓	✓	✓	
Chrome Back Door Garnish	✓	✓	✓	✓	
ORVM Turn Indicator	✓	✓	✓	✓	
UV Protect Glass	✗	✓	✗	✓	
Floating Roof Effect with A / B / C Pillar Blackout	✓	✓	✓	✓	
Rear Roof Antenna	✓	✓	✓	✓	
Safety & Security					
Dual Front Airbags (Driver + Passenger)	✓	✓	✓	✓	
ABS + EBD + BA	✓	✓	✓	✓	
TECT Body [Total Effective Control Technology]	✓	✓	✓	✓	
Front Fog Lamps	✓	✓	✓	✓	
Rear Wiper + Washer + Defogger	✓	✓	✓	✓	
Electrochromic Inner Rear View Mirror	✓	✓	✓	✓	
Reverse Parking Camera with Display in Audio	✗	✓	✗	✓	
Reverse Parking Sensors (4 No.s)	✓	✓	✓	✓	
Auto Headlamps On / Off	✗	✓	✗	✓	
Follow Me Home / Car Headlamps	✗	✓	✗	✓	
Anti-pinch Driver Side Power Window	✓	✓	✓	✓	
Front Seatbelt with Pre-tensioners & Force Limiters	✓	✓	✓	✓	
Warning Lamp or Buzzer (Low Fuel, Door Ajar, Headlamp On, Key Left, Seatbelt Reminder)	✓	✓	✓	✓	
Speed Sensitive Auto Door Lock	✓	✓	✓	✓	
High Speed Warning Buzzer ⁴	✓	✓	✓	✓	

Warning Lamp or Buzzer (Low Fuel, Door Ajar, Headlamp On, Key Left, Seatbelt Reminder)	✓	✓	✓	✓
Speed Sensitive Auto Door Lock	✓	✓	✓	✓
High Speed Warning Buzzer ⁴	✓	✓	✓	✓
Interior				
New Smart Playcast Audio ⁵				
Touchscreen Audio, MP3 / AM / FM / Bluetooth Smartphone Connect (Apple CarPlay / Android Auto)	✓	✓	✓	✓
Smartphone based Navigation with USB & AUX				
4 Speakers & 2 Tweeters	✓	✓	✓	✓
Steering Mounted Audio & Calling Controls	✓	✓	✓	✓
Chrome Inside Door Handles & Parking Brake Tip	✓	✓	✓	✓
Front Centre Armrest with Storage	✓	✓	✓	✓
Front Door Courtesy Lamp & Footwell Lamp	✓	✓	✓	✓
Luggage Room Lamp	✓	✓	✓	✓
New Dual-tone Fabric Seats	✓	✓	✓	✓
Fabric Door Trim	✓	✓	✓	✓
Smoked Silver Interior Accents	✓	✓	✓	✓
Advanced Lithium Ion Battery with ISG ⁶				
- Torque Assist Function	✗	✗	✗	✗
- Idle Start Stop Function				
- Brake Energy Regeneration Function				
Front & Rear (2 No.s) Adjustable Headrest	✓	✓	✓	✓
Interactive TFT Multi Information Display				
- Door Ajar Display				
- Power & Torque	✓	✓	✓	✓
- Average Fuel Economy & Speed				
- Clock & Outside Temperature				
Glove Box Illumination	✓	✓	✓	✓
Leather Wrap Steering Wheel ⁷	✗	✓	✗	✓
Power Windows with Driver Side Auto Up / Down	✓	✓	✓	✓
Luggage Parcel Shelf	✓	✓	✓	✓
Front Map Lamp & Centre Cabin Lamp	✓	✓	✓	✓
Waterfall Style Front Gear Console with Cup Holder	✓	✓	✓	✓
Comfort & Convenience				
Smart Entry with Engine Push Start / Stop button	✓	✓	✓	✓
Tilt + Telescopic Steering	✓	✓	✓	✓
Driver Seat Height Adjust	✓	✓	✓	✓
Auto AC	✓	✓	✓	✓
60:40 Split Rear Seats	✓	✓	✓	✓
Remote Keyless Entry	✓	✓	✓	✓
ORVM Electric Adjust & Retract + Auto Fold	✓	✓	✓	✓
Electric Power Steering	✓	✓	✓	✓
Driver Sunvisor with Vanity Mirror & Lamp	✗	✓	✗	✓
Co-driver Sunvisor with Vanity Mirror & Lamp	Only Vanity Mirror	✓	Only Vanity Mirror	✓
Central Locking	✓	✓	✓	✓
Front & Rear Door Bottle Holder	✓	✓	✓	✓
Electromagnetic Back Door Opening	✓	✓	✓	✓

Disclaimer for: *1 - VDA Method, *2 - Fuel Efficiency as Certified by Test Agency under Rule 115 of CMVR, 1989 under standard Test Conditions, Actual Mileage on Road may vary. *3 - Spare Wheel Material is Steel & Spare Tyre Size is 185 / 65 R15. *4 - Speed Warning Buzzer gives audible warning of Over Speed to Driver, If Vehicle Speed >80 km/h then two beeps will sound every minute. If Vehicle Speed >120 km/h, Continuous beeps will sound. This Buzzer Does not Indicate any Malfunction in Vehicle. *5 - Application Features & Displays may vary depending on different Operating Systems or Smartphone Devices used. Avoid using the phone while driving for your safety. Apple CarPlay is registered trademark of Apple Inc. Android Auto is registered Trademark of Google Inc. Bluetooth is a registered Trademark of Bluetooth SIG. *6 - Only with K12N Engine in Manual Transmission [G MT]. Lithium Ion Battery poses safety & environmental hazard if disposed inappropriately. Do not dispose battery in garbage bin. Always ask Toyota Authorized Dealer for replacing or disposing battery. *7 - Some Parts of Leather appointed upholstery will contain man - made material. * - Vehicle pictured and specifications detailed in this brochure may vary between models & equipment. Addition of Features may change figures in this chart. Actual colour of the vehicle body & upholstery might differ slightly from images depicted in this brochure. Features are grade specific. Toyota Kirloskar Motor Pvt Ltd reserves the right to alter the details of specifications and equipment without a notice.

MAKE WAY FOR RESPECT

The urban world needs a frame to match. The Toyota Urban Cruiser is built with both form and function in mind for the modern discerning driver. Take over the roads with a commanding SUV presence created for the modern era.



All-new Powerful K-series
1.5L, 4-Cylinder Gasoline Engine



Two-Slat Wedge-Cut Front
Grille with Chrome & Grey Finish



Choice of MT, AT transmission
on all grades



Dual Chamber LED Projector
Headlamps with Chrome Accents



Auto Rain-Sensing Wipers

SPECIFICATIONS OF URBAN CRUISER

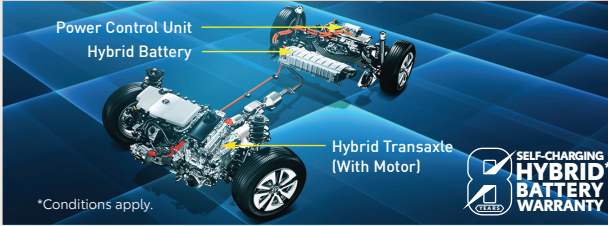
Engine	Displacement	1462 cc (cm ³)	
	Fuel Type	Petrol	
	Max. Power	77 kW (104.72 PS) @ 6000 rpm	
	Max. Torque	138 Nm @ 4400 rpm	
	No. of Cylinders	4	
	Emission Standard	BS VI	
Transmission	Type	5 MT / 4 AT	
	Length	3995 mm	
	Width	1790 mm	
	Height	1640 mm	
	Wheelbase	2500 mm	
	Boot Space ^{*1}	0.328 m ³ (328 l)	
	Turning Radius	5.2 m	
Dimensions & Weight	Fuel Tank Capacity	0.048 m ³ (48 l)	
	Seating Capacity	5	
	Kerb Weight	MT: 1115 kg - 1130 kg AT (Advanced Li-Ion Battery with ISG): 1135 kg - 1150 kg	
	Gross Vehicle Weight	1600 kg	
	Fuel Efficiency ^{*2}	MT: 17.03 km/l AT (Advanced Li-Ion Battery with ISG): 18.76 km/l	
	Suspension	Front	McPherson Strut with Coil Spring
		Rear	Torsion Beam with Coil Spring
Brakes	Front	Ventilated Disc	
	Rear	Drum	
Wheel & Tyre	Wheel & Tyre Size ^{*3}	MID: 205/ 60 R16 (Steel Wheel with Full Wheel Cover) HIGH & PREMIUM: 215/ 60 R16 (Alloy Wheel)	

	MID (MT)	HIGH (MT)	PREMIUM (MT & AT)
Exterior			
Dual Chamber LED Projector Headlamps with Chrome Accents	✓	✓	✓
Dual Function LED DRL & Turn Indicator in Headlamps	✓	✓	✓
Split LED Rear Combination Lamps	✓	✓	✓
Rear Spoiler with LED High-Mount Stop Lamp	✓	✓	✓
Front LED Foglamps	x	x	✓
Two-Slat Wedge-Cut Front Grille with Chrome & Grey finish	✓	✓	✓
Stylish Body Colour Bumper & Door Handles	✓	✓	✓
Body Colour ORVM	✓ (Body)	✓ (Body)	✓ (Body / Roof)
Skid Plate Front & Rear	✓ (Black)	✓ (Silver)	✓ (Silver)
Chrome Back Door Garnish with Name Embossed	✓	✓	✓
ORVM Turn Indicator	✓	✓	✓
Alloy Wheels with Centre Cap	x	✓ (Black)	✓ (Diamond Cut)
Steel Wheel with Full Wheel Cover	✓	x	x
Roof Rails	✓ (Black)	✓ (Gunmetal Grey)	✓ (Gunmetal Grey)
Safety & Security			
Dual Front Airbags (Driver + Co-Driver)	✓	✓	✓
ABS with EBD	✓	✓	✓
Advanced Body Structure (TECT Body)	✓	✓	✓
Speed-Sensitive Auto Door Lock	✓	✓	✓
Anti-Pinch Driver-Side Power Window	✓	✓	✓
Hill Hold Control	✓ (AT Only)	✓ (AT Only)	✓ (AT Only)
Rear Wiper & Washer	x	✓	✓
Rear Defogger	✓	✓	✓
Day / Night Inner Rearview Mirror	✓ (Manual)	✓ (Manual)	✓ (Auto)
ISOFIX Child Seat Restraint System	✓	✓	✓
Immobilizer & Anti-Theft Security Alarm	✓	✓	✓
Reverse Parking Camera with Display in Audio	x	x	✓
Reverse Parking Sensors (4 No.s) with Infographic Display	✓	✓	✓
Auto Headlamps On / Off	x	x	✓
Front Seat Belt with Pre-Tensioners & Force Limiters	✓	✓	✓
Warning Lamp/ Reminder for (Low Fuel, Door Ajar, Headlamp On, Key Left, Front Seat Belt)	✓	✓	✓
High Speed Warning Buzzer ^{*4}	✓	✓	✓
Adjustable Shoulder Anchor for Front Seat Belt	x	x	✓

Interior	MID (MT)	HIGH (MT)	PREMIUM (MT & AT)
Dual-Tone Interior	✓	✓	✓
Premium Dark Brown Fabric Seats	✓ (Rain Pattern)	✓ (Honey Comb Pattern)	✓ (Honey Comb Pattern)
New 17.8 cm Smart Playcast Touchscreen Audio ^{*5} with MP3/ AM / FM / Bluetooth / USB / Aux-In Smartphone Connect (Apple CarPlay/ Android Auto) Smartphone-based Navigation	x	✓	✓
MP3 / AM / FM / CD / Bluetooth / USB / Aux-In Audio with Remote Control	✓	x	x
Steering Mounted Control for Bluetooth & Cruise Control	x	✓	✓
Steering Mounted Audio Control	✓	✓	✓
Door Speakers (4 No's)	✓	✓	✓
Tweeters (2 No's)	x	x	✓
Voice Command	x	✓	✓
Chrome Inside Door Handles	x	✓	✓
Front Centre Sliding Armrest with Storage	x	x	✓
Rear Centre Armrest with Cup Holder	✓	✓	✓
Glove Box & Front Footwell Illumination	✓	✓	✓
Luggage Room Lamp with Accessory Socket	x	✓	✓
Speedometer & Tachometer with 7-Step Illumination Control	✓	✓	✓
Multi Information Display with Tripmeter & Clock	✓	✓	✓
Meter Illumination Colour	✓	✓ (5 Colours)	✓ (5 Colours)
Accessory Socket Front Console with USB & Aux In Port	✓	✓	✓
Advanced Lithium Ion Battery with ISG ^{*6} - Torque Assist Function - Idle Start/Stop Function - Brake Energy Regeneration Function	✓ (AT Only)	✓ (AT Only)	✓ (AT Only)
Front & Rear Adjustable Headrest	✓	✓	✓
Leather Wrap Steering Wheel ^{*7}	x	x	✓
Front & Rear Power Windows with Driver Side Auto Up / Down	✓	✓	✓
Luggage Parcel Shelf Dual-Side Operable with Shelf Strings	x	✓	✓
Roof Front Map Lamp	x	✓	✓
Piano Black IP Centre Garnish	x	✓	✓
Chrome Accents in Steering Wheel	x	✓	✓
Outside Temperature Display	x	✓	✓
Comfort & Convenience			
Smart Entry with Engine Push Start / Stop button	✓	✓	✓
Auto Rain-Sensing Wipers	x	x	✓
Cruise Control	x	✓	✓
Electronic Power Steering with Tilt Function	✓	✓	✓
Driver Seat Height Adjust	x	✓	✓
Auto AC	✓	✓	✓
60:40 Split Rear Seats	x	✓	✓
Rear Seat Flip & Fold Function	✓	✓	✓
ORVM Electric Adjust & Electric Retract	✓	✓	✓ (Auto Fold)
Gear Position Indicator	✓ (AT Only)	✓ (AT Only)	✓ (AT Only)
Gear Shift Indicator	✓ (MT Only)	✓ (MT Only)	✓ (MT Only)
Upper Glove Box	✓	✓	✓ (with Cool Function)
Driver Sunvisor with Ticket Holder	✓	✓	✓
Co-Driver Sunvisor with Vanity Mirror & Ticket Holder	✓	✓ (With Lamp)	✓ (With Lamp) mv
Exterior Colour Matrix			
Sunny White	✓	✓	✓
Iconic Grey	✓	✓	✓
Suave Silver	✓	✓	✓
Rustic Brown	✓	✓	x
Spunky Blue	✓	✓	x
Groovy Orange	✓	✓	x
Rustic Brown with Sizzling Black Roof	x	x	✓
Spunky Blue with Sizzling Black Roof	x	x	✓
Groovy Orange with Sunny White Roof	x	x	✓

Disclaimer: *1 - VDA Method. *2 - Fuel Efficiency as Certified by Test Agency under Rule 115 of CMVR, 1989 under standard Test Conditions. Actual Mileage on Road may vary. *3 - Spare Tyre Wheel Material is Steel and Spare Tyre Size is 215/ 60 R16 for High & Premium Variants & 205/ 60 R16 for MID Variant. *4 - Speed Warning Buzzer gives audible warning of Over-Speed to Driver. *5 - If vehicle speed >80 km/h then two beeps will sound every minute. *6 - If vehicle speed >120 km/h, continuous beeps will sound. *7 - This Buzzer does not indicate any malfunction in vehicle. *8 - Application Features & Displays may vary depending on different operating systems or smartphone devices used. *9 - Avoid using the phone while driving for your safety. *10 - Apple CarPlay is registered trademark of Apple Inc. *11 - Android Auto is registered trademark of Google Inc. *12 - Bluetooth is a registered trademark of Bluetooth SIG. *13 - Lithium Ion battery poses safety & environmental hazard if disposed inappropriately. Do not dispose battery in garbage bin. Always ask Toyota Authorized Dealer for replacing or disposing battery. *14 - Some parts of leather-appointed upholstery will contain man-made material. Vehicle pictured and specifications detailed in this brochure may vary between models & equipment. Addition of features may change figures in this chart. Actual colour of the vehicle body & upholstery might differ slightly from images depicted in this brochure. Features are grade specific. **Toyota Kirloskar Motor Pvt. Ltd.** reserves the right to alter the details of specifications and equipment without a notice.

SELF-CHARGING HYBRID ELECTRIC VEHICLE



At Toyota, we lead the way to the future of mobility with our self-charging hybrid electric vehicles while enriching lives around the world with the safest and most responsible ways of moving people.

Toyota's self-charging hybrid electric vehicles have a combination of gasoline engine and an electric motor. The vehicle can be driven using its electric power alone, as well as with the engine and electric motor working together. Unlike other cars, Toyota's hybrid cars are self-charging. Which means they needn't be plugged-in to be charged. The core of the hybrid electric system- the hybrid battery now comes with an 8-year/160000 kms self-charging hybrid electric battery warranty. Our flagship self-charging hybrid electric vehicles in India are Camry and Vellfire.

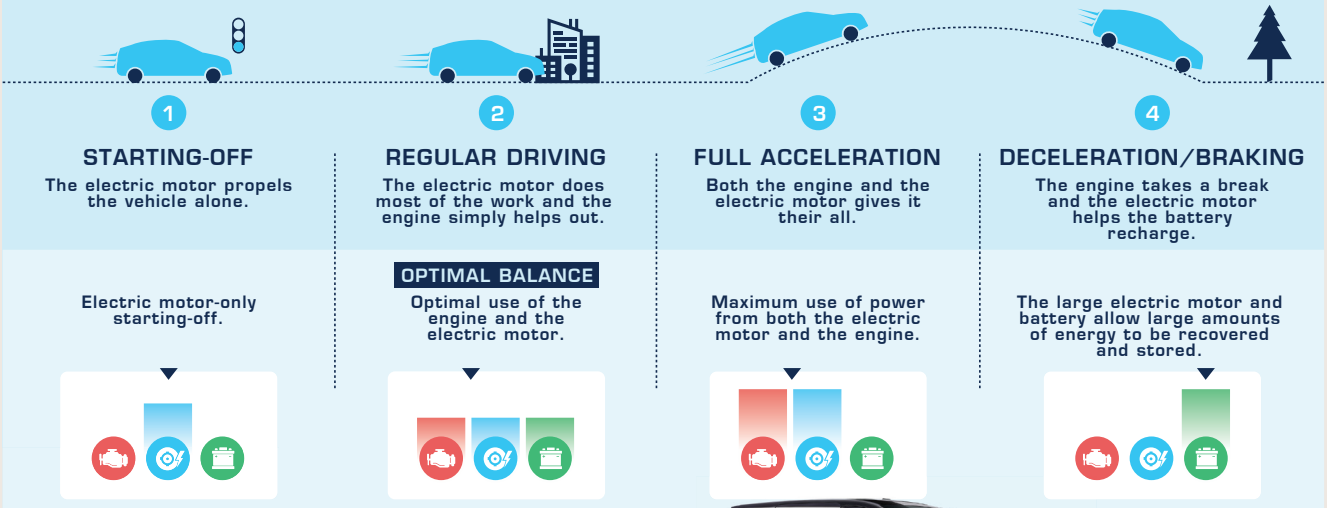
DISCOVER THE REALITY BEHIND THE MYTHS

Myth	Reality
Self-charging Hybrid Electric Vehicles are not suitable for long journeys	Self-charging Hybrid Electric Vehicles are ideal for long journeys as they self-charge themselves on the go
Self-charging Hybrid Electric Vehicles are not smooth to drive	Self-charging Hybrid Electric Vehicles drive smoothly as they run on electric power 60% of the time
Self-charging Hybrid Electric Vehicles accelerate slowly	Self-charging Hybrid Electric Vehicles have powerful acceleration as they combine the power of electric motor and engine

HOW IT WORKS



SELF-CHARGING ELECTRIC SYSTEM



CAMRY
HYBRID
HYBRID ELECTRIC VEHICLE



NEW VELLFIRE
SELF-CHARGING HYBRID ELECTRIC VEHICLE

Note: Camry and Vellfire are not available in CSD. For further details on the specifications please visit: www.toyotabharat.com

DEALER NETWORK REACH

Presence in 278 cities

284

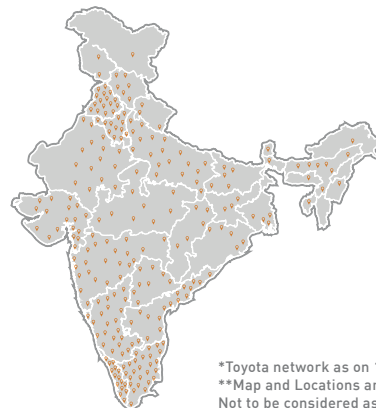
Sales Touch Points

339

Service Touch Points

278

Cities



For enquiries, just give a missed call to **8367683676**
Visit: <https://www.toyotabharat.com/corporate-sales/>

[f /ToyotaIndia](#) [t /Toyota_India](#) [i /toyota.india](#) [y /ToyotainIndia](#) [+91 4071781588](#)

*Toyota network as on 1st Feb 2021.
**Map and Locations are Indicative only.
Not to be considered as actuals.